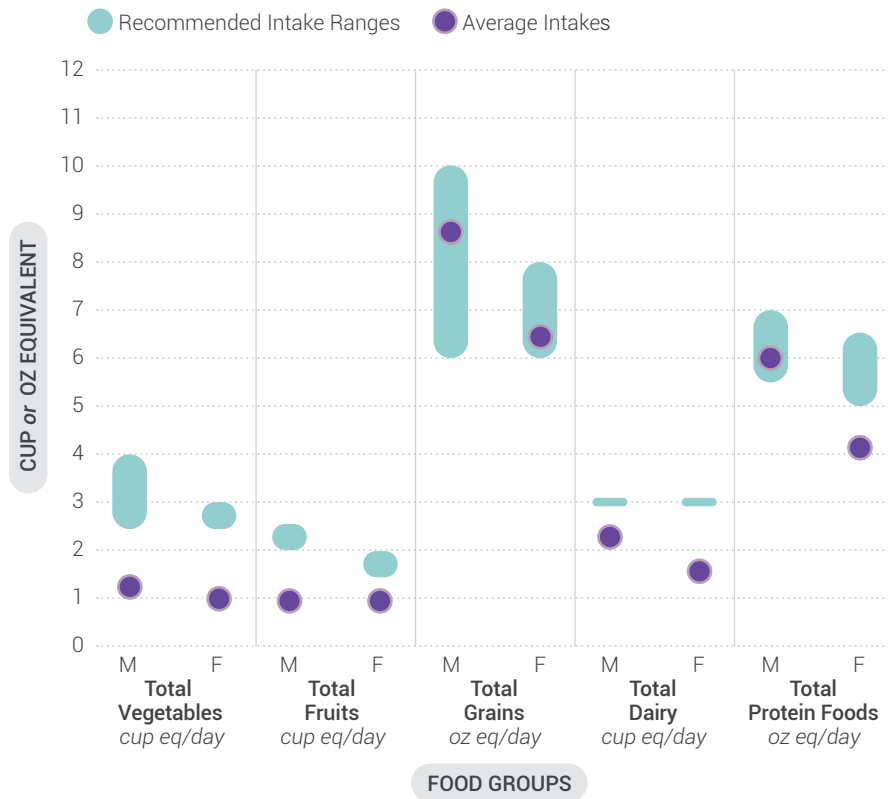
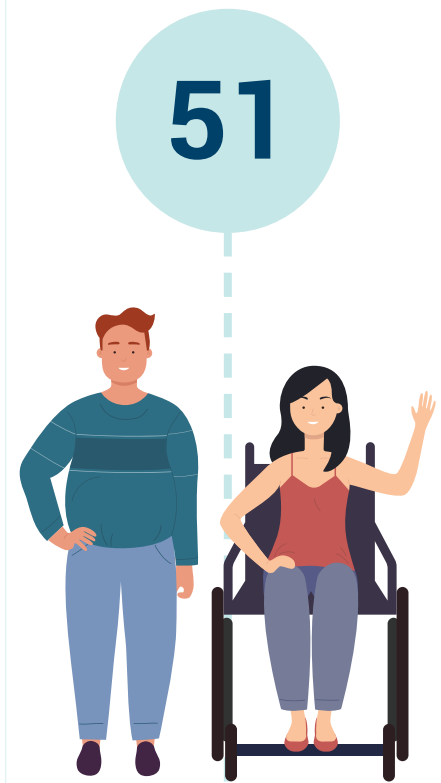


Current Intakes: Ages 14 Through 18

Average Daily Food Group Intakes Compared to Recommended Intake Ranges

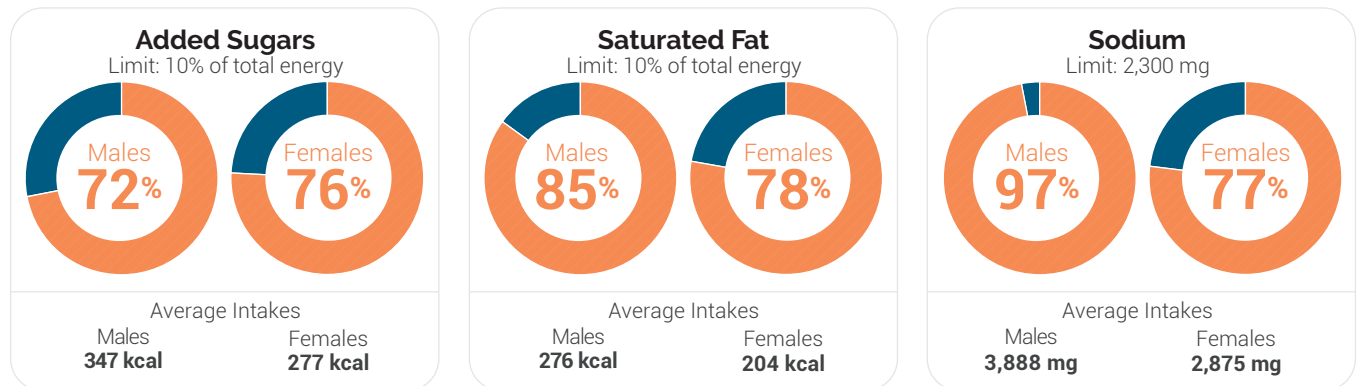


Healthy Eating Index Score (on a scale of 0-100)



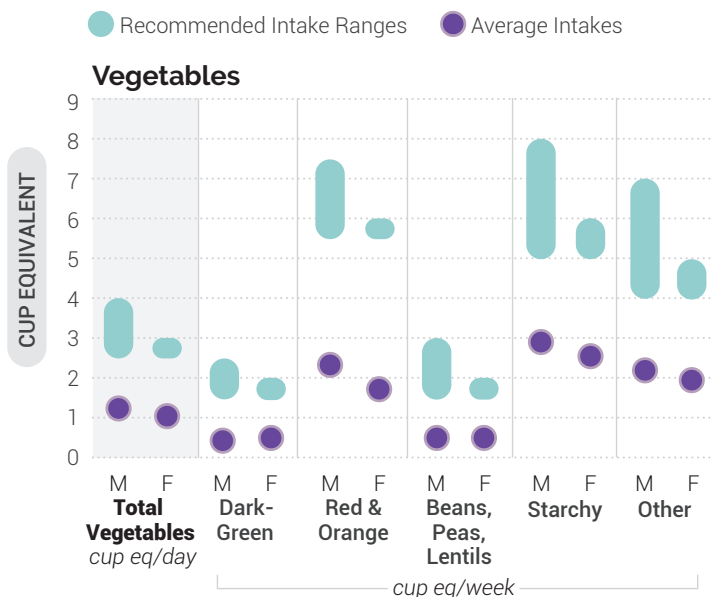
Percent Exceeding Limits of Added Sugars, Saturated Fat, and Sodium

● Exceeding Limit ● Within Recommended Limit



Data Sources: Average Intake and HEI-2015 Scores: Analysis of What We Eat in America, NHANES 2015-2016, day 1 dietary intake data, weighted. Recommended Intake Ranges: Healthy U.S.-Style Dietary Patterns (see [Appendix 3](#)). Percent Exceeding Limits: What We Eat in America, NHANES 2013-2016, 2 days dietary intake data, weighted.

Average Intakes of Subgroups Compared to Recommended Intake Ranges: Ages 14 Through 18



Data Sources: Average Intakes: Analysis of What We Eat in America, NHANES NHANES 2015-2016, day 1 dietary intake data, weighted.
Recommended Intake Ranges: Healthy U.S.-Style Dietary Patterns (see [Appendix 3](#)).

